



Honiton Road, Coventry, CV2 3EJ

Property Description

Beautiful 3 bedroom family home in sought after Honiton Road - Presented by Sheldon Bosley Knight Coventry.

Welcome to this beautiful and spacious three-bedroom terraced family home, located on the sought after Honiton Road in CV2! Ideally positioned on the ever-popular Honiton Road. Offered in good condition throughout, and providing gallons of natural light... this brilliant home provides generous living space and fantastic potential for buyers looking to renovate to their own taste!

Stepping inside, you are greeted by a bright front living room, leading through to a practical kitchen and a convenient downstairs wet room. To the rear, a spacious conservatory adds a versatile second reception space, perfect for dining, relaxing, or enjoying views over the garden all year round.

Upstairs, the property offers two comfortable double bedrooms along with a third single room, ideal as a home office, dressing room, or child's bedroom.

With its desirable location, flexible layout and scope to personalise, this Honiton Road home presents an excellent opportunity for first-time buyers, families or investors alike.

For more information or to arrange a viewing, please contact Sheldon Bosley Knight, Coventry to ensure you don't miss out on this gorgeous property.

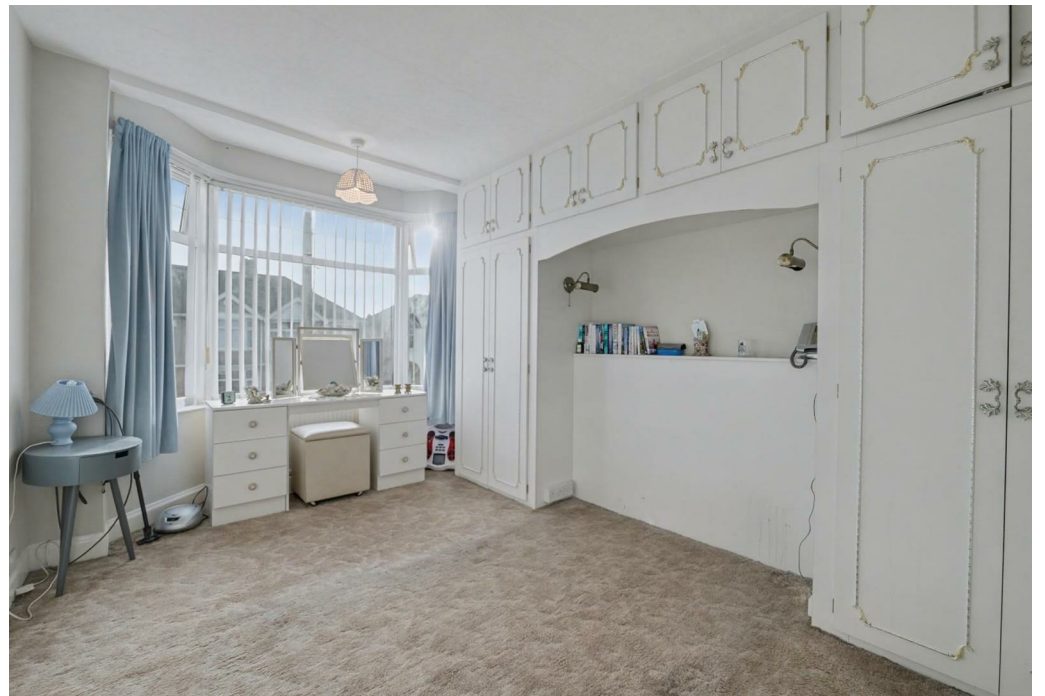
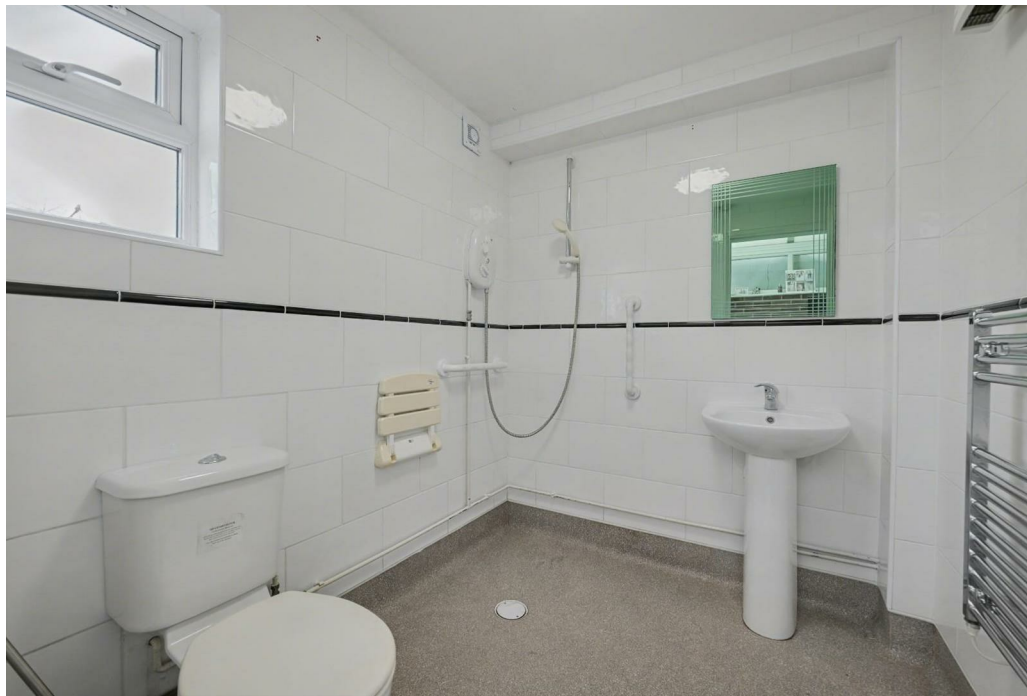




Key Features

- Gorgeous 3 bedroom family home
- Rear conservatory space
- Excellent natural light and character
- Large through living room & dining space
- Convenient downstairs wet room
- 3 excellent sized bedrooms
- Family bathroom with walk in shower
- Excellent location with proximity to University Hospital, good schools & local amenities

£220,000



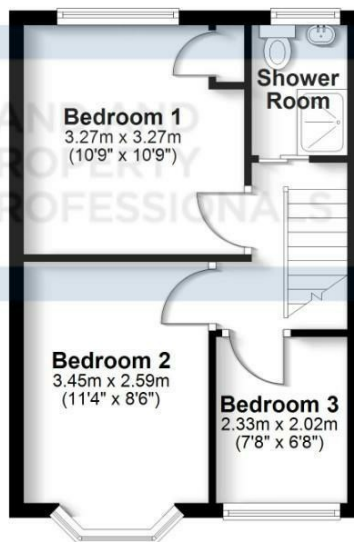
Ground Floor

Approx. 44.6 sq. metres (479.9 sq. feet)



First Floor

Approx. 32.3 sq. metres (347.4 sq. feet)



Total area: approx. 76.9 sq. metres (827.2 sq. feet)

All efforts have been made to ensure the measurements are accurate on this floor plan, however these are for guidance purposes only.
Plan produced using PlanUp.



EPC Rating -

Tenure - Freehold

Council Tax Band - B

Local Authority
Coventry City Council



We routinely refer clients to both our recommended legal firm and a panel of financial services providers. It is your decision whether you choose to deal with these companies. In making that decision, you should know that we receive a referral fee.

**SHELDON
BOSLEY
KNIGHT**

LAND AND
PROPERTY
PROFESSIONALS